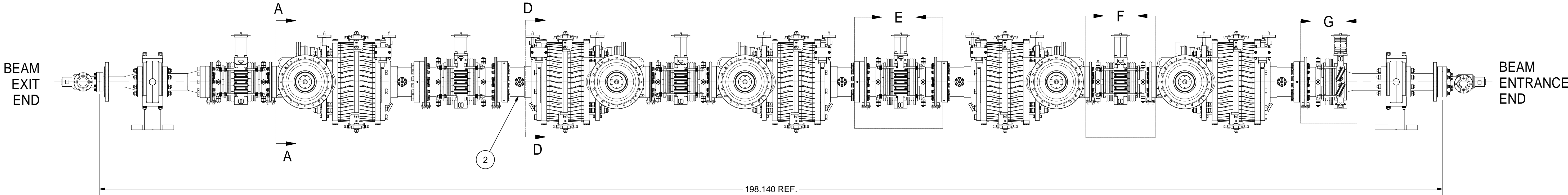
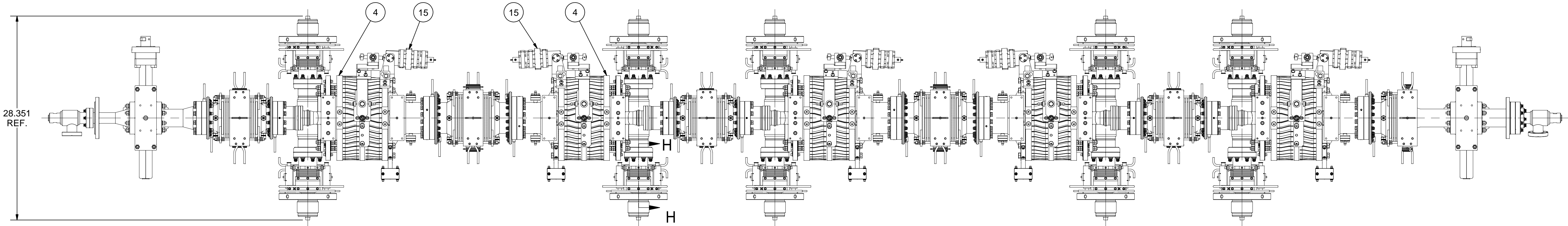
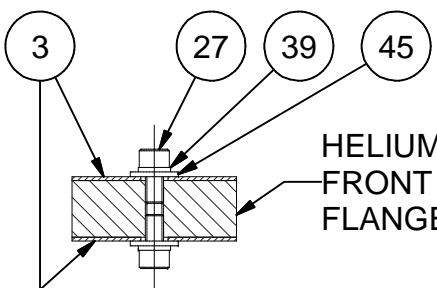
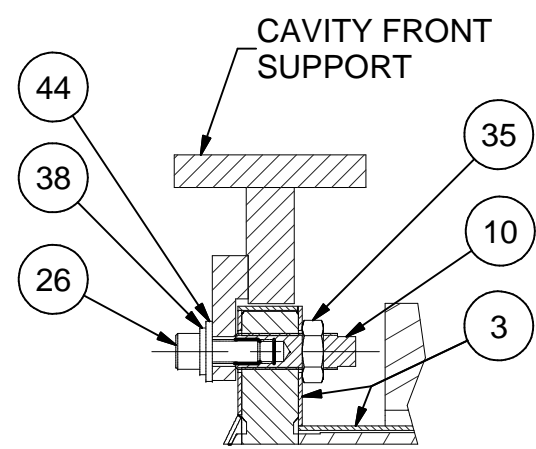
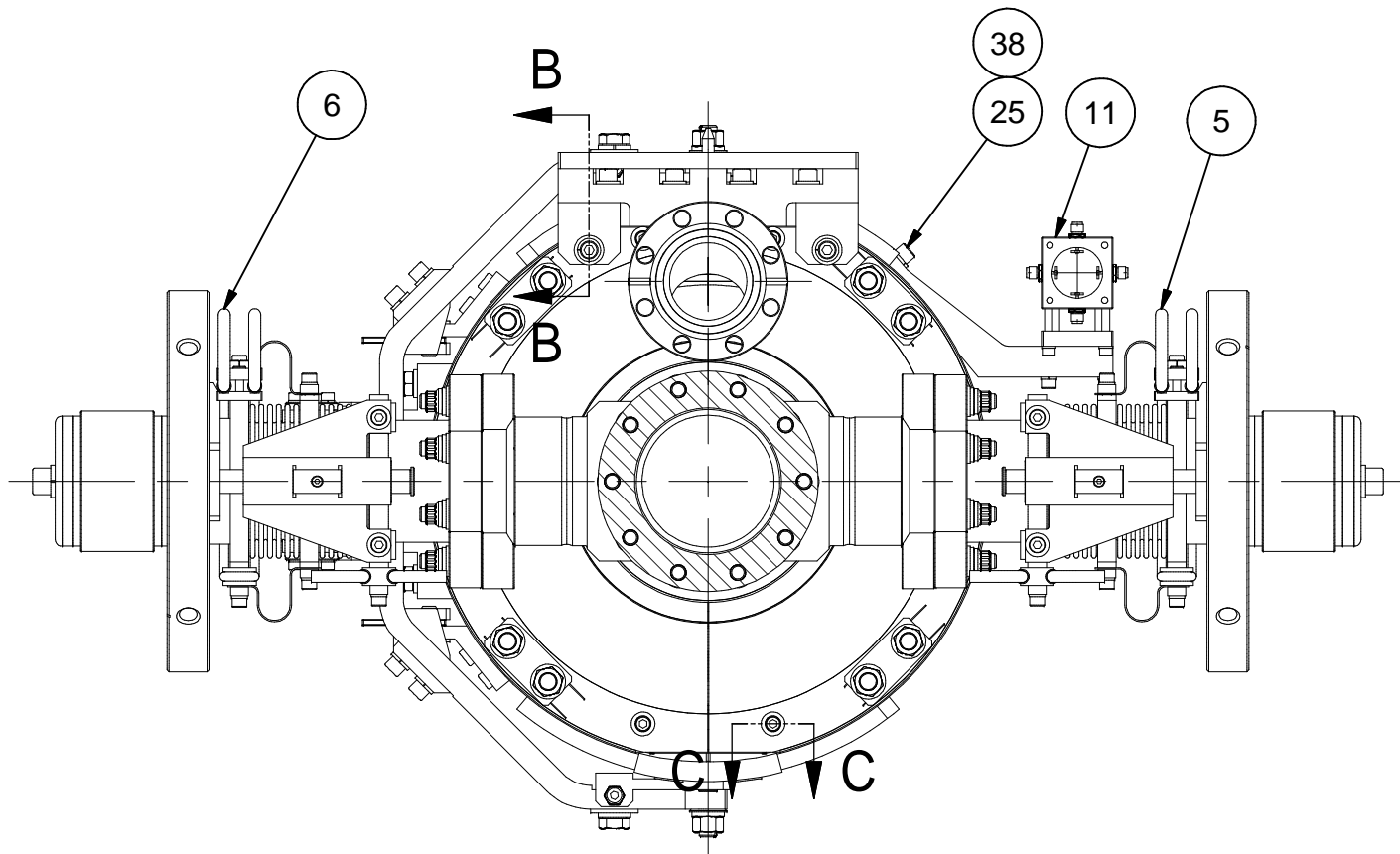


REVISIONS			
SYM.	ZONE	DESCRIPTION	DATE APP.




1 BEAM LINE COMPONENTS ASSEMBLY II, STEP 00

FILE NAME: 7102-080
SHEET NO.: 1
DFT. SCALE: 1:7.5
MATERIAL:
QTY: 1 PER CRYOMODULE
NOTES: 1. FOR SECTIONS AND DETAILS D, E, F, G, H SEE NEXT SHEET.
2. SEE SHEET 3 FOR ISO VIEW.

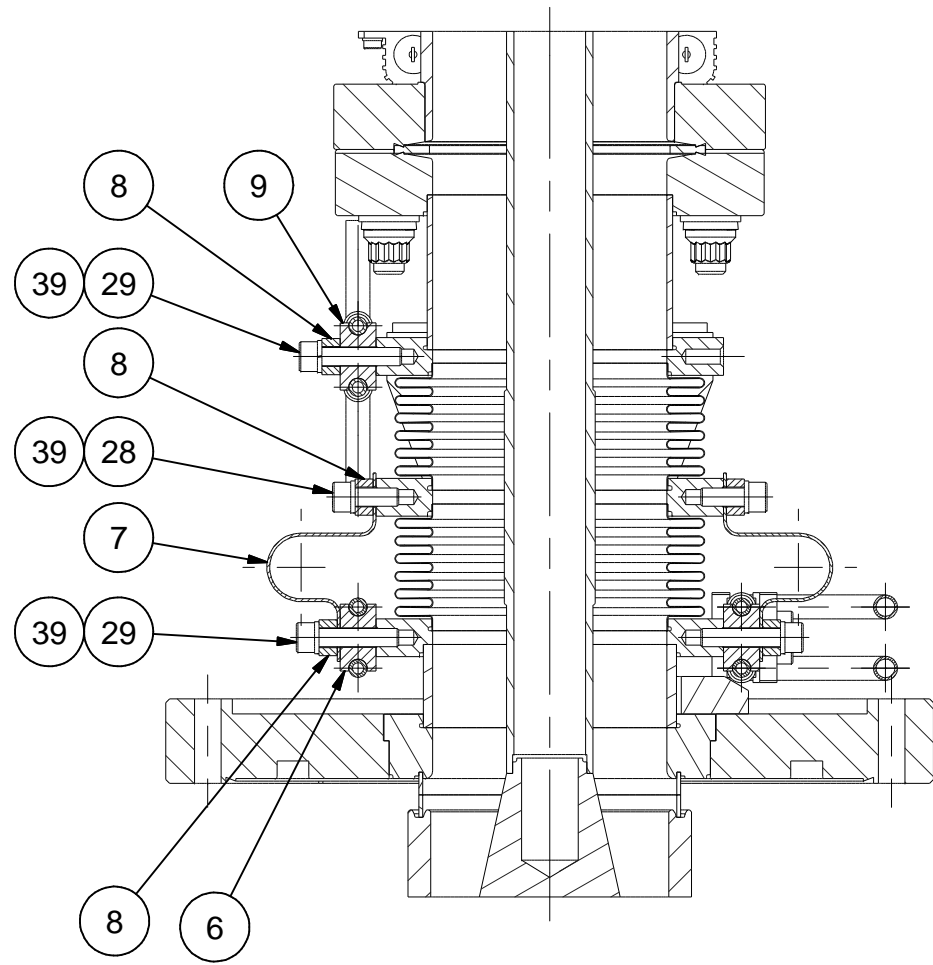


45	Purchased	#10 Washer, 0.5 OD, 316 SS	80		McMaster-Carr's 91950A027	
44	Purchased	1/4 SAE Washer, 316 SS	10		McMaster-Carr's 91950A029	
41	Purchased	#2 Spring Washer, 316 SS	44		McMaster-Carr's 92147A410	
40	Purchased	#4 Spring Washer, 316 SS	88		McMaster-Carr's 92147A415, or equiv.	
39	Purchased	#10 Spring Washer, 316 SS	230		McMaster-Carr's 92147A430	
38	Purchased	1/4 Spring Washer, 316 SS	20		McMaster-Carr's 92147A029	
37	Purchased	M10 Spring Washer, 316 SS	60		McMaster-Carr's 92153A434	
35	Purchased	3/8-24 Hex Jam Nut, 316 SS	10		McMaster-Carr's 94805A217	
32	Purchased	#2-56 x 1/4 Socket Head Cap Screw, 316 SS	44		McMaster-Carr's 92185A077	
31	Purchased	#4-40 x 3/8 Socket Head Cap Screw, 316 SS	88		McMaster-Carr's 92185A108, or equiv.	
30	Purchased	#10-32 x 1/2 Flat Head Hex Socket Cap Screw, 316 SS	48		McMaster-Carr's 90585A989	
29	Purchased	#10-32 x 7/8 Socket Head Cap Screw, 316 SS	90		McMaster-Carr's 92185A960	
28	Purchased	#10-32 x 1/2 Socket Head Cap Screw, 316 SS	60		McMaster-Carr's 92185A989	
27	Purchased	#10-32 x 3/8 Socket Head Cap Screw, 316 SS	80		McMaster-Carr's 92185A988	
26	Purchased	1/4-28 x 5/8 Socket Head Cap Screw, 316 SS	10			
25	Purchased	1/4-28 x 7/8 Socket Head Cap Screw, 316 SS	10			
24	Purchased	M10 x 30 Hex Head Cap Screw, 316 SS	60		McMaster-Carr's 93635A424	

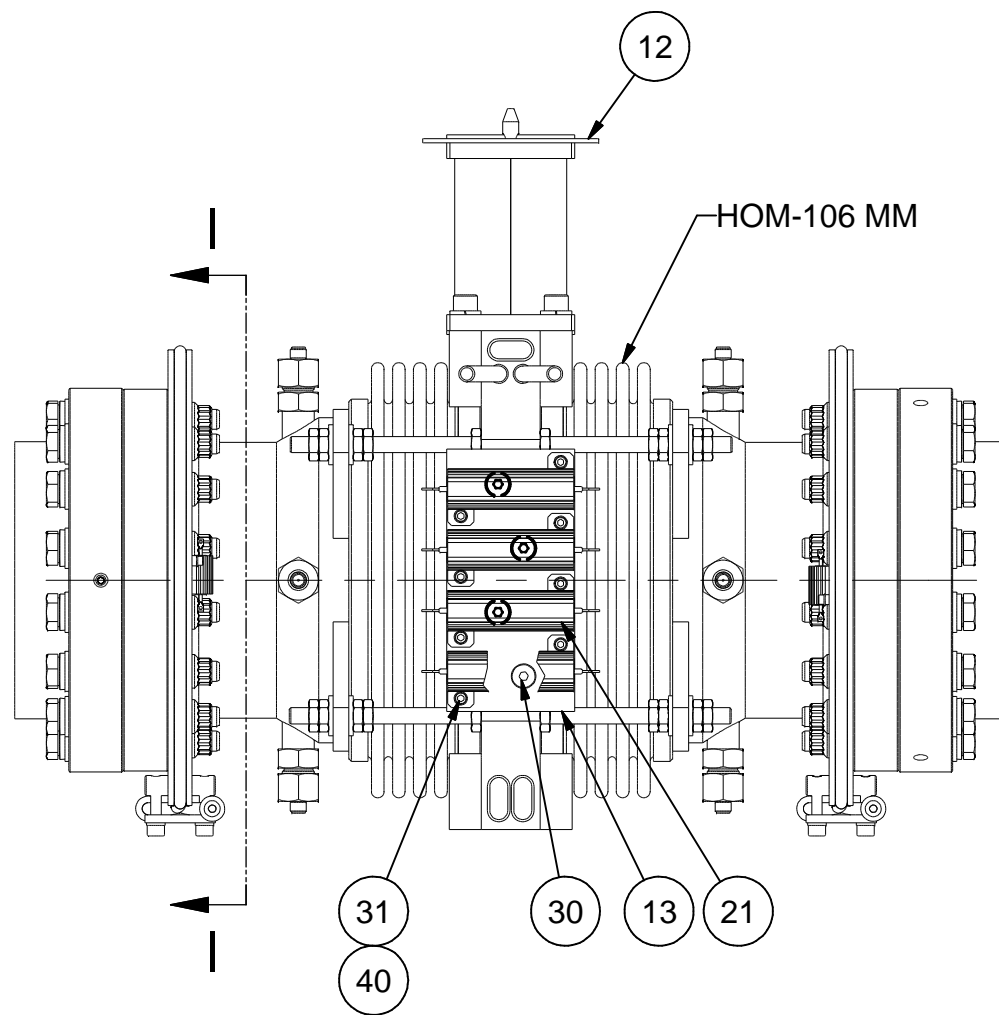
22	Purchased	5 W RESISTOR (RH005 TYPE)	22						
21	Purchased	50 W RESISTOR (RH050 TYPE)	44						
15	7102-085	HEAT SINK AND MAGNETIC SHIELD ON TUNER MECHANISM	5						
14	7102-028 (Sh.2)	50 W RESISTORS PLATE-106H	2						
13	7102-026 (Sh.9)	50 W RESISTORS PLATE	10						
12	7102-031 (Sh.3)	OFE COPPER SHIM	6						
11	7102-040	WPM BLOCK SUPPORT ASSEMBLY	5						
10	7102-032 (Sh.3)	3/8-24 SET SCREW MODIF.	10						
9	7102-037 (Sh.1)	INPUT COUPLER COLD, 5 K FLANGE COOLING UNIT	10						
8	7102-036 (Sh.7)	CLAMP STRIP	50						
7	7102-036 (Sh.7)	80 K FLEXIBLE JUMPER	20						
6	7102-036 (Sh.2)	INPUT COUPLER COLD, 80 K FLANGES COOLING UNIT, LEFT	5						
5	7102-036 (Sh.2)	INPUT COUPLER COLD, 80 K FLANGES COOLING UNIT, RIGHT	5						
4	7102-005	TUNER WITH PIEZO ASSEMBLY	5						
3	7102-025	CAVITY MAGNETIC SHIELD I	5						
2	7102-073	BEAM LINE COMPONENTS ASSEMBLY I	1						
1	7102-080 (Sh.1)	BEAM LINE COMPONENTS ASSEMBLY II	X						

ITEM	DWG. NO.	DESCRIPTION	G1	G2	G3	REMARKS	REV.
			QUANTITY				
7102-080	CR-1	UNLESS OTHERWISE SPECIFIED: DIMENSIONS ARE IN INCHES: TOLERANCES ON: .0 ± .02 .00 ± .010 .000 ± .005 FRACTIONS ± 1/32 ANGLES ± 0.5° ALL SURFACES					
		 CORNELL UNIVERSITY Floyd R. Newman Laboratory Ithaca, NY 14853					
		ERL INJECTOR CRYOMODULE BEAM LINE COMPONENTS ASSEMBLY II, STEP 00 BEAM LINE COMPONENTS ASSEMBLY II; ORTHO VIEWS					
CHECKED BY: VM	DRAWN BY: vm	DRAWN FOR: M.Liepe	DATE: 9/14/07	SCALE: D	7102-080	REV.	
APPROVED BY: VM					SH. NO. 1 OF 3		

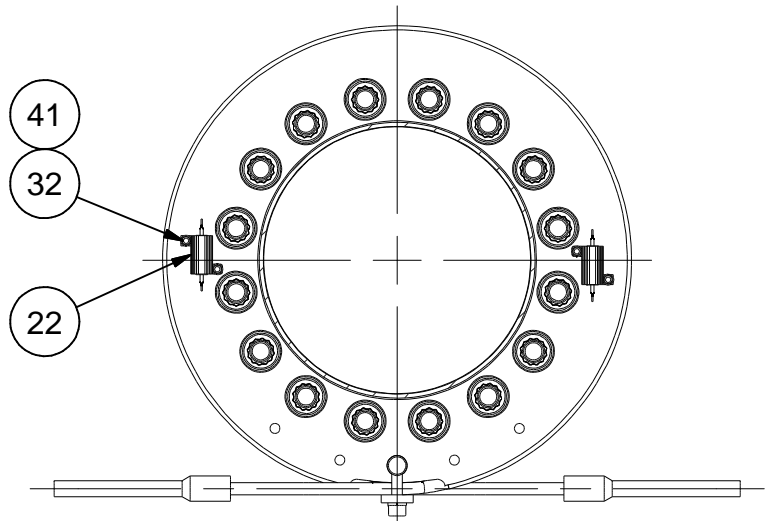
REVISIONS				
SYM.	ZONE	DESCRIPTION	DATE	APP.



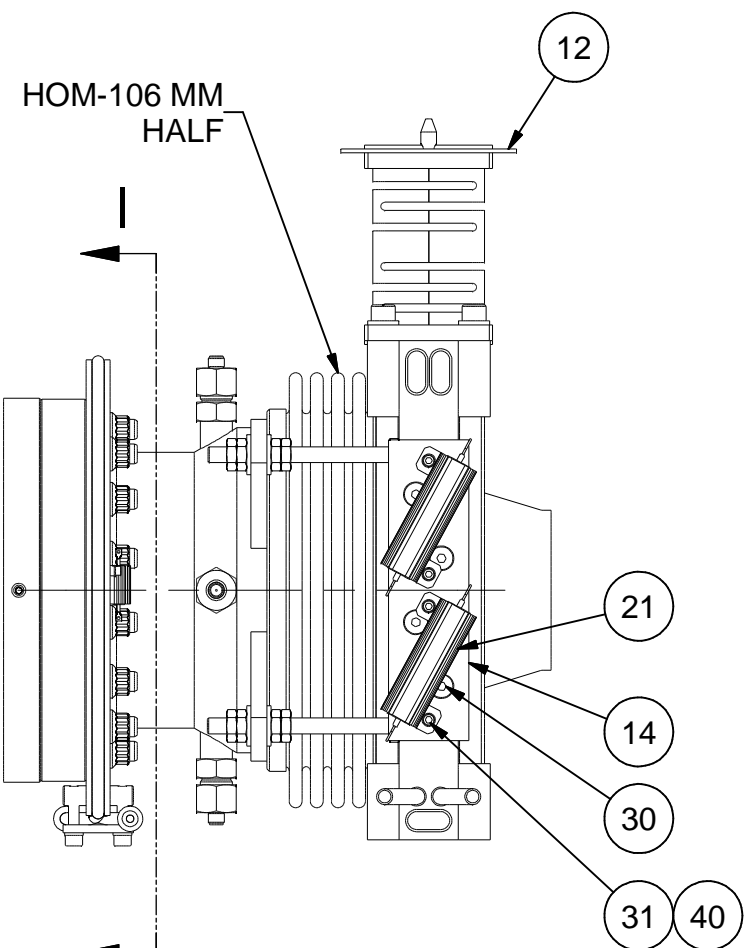
SECTION H-H
(FROM SHEET 1)
SCALE 1:2



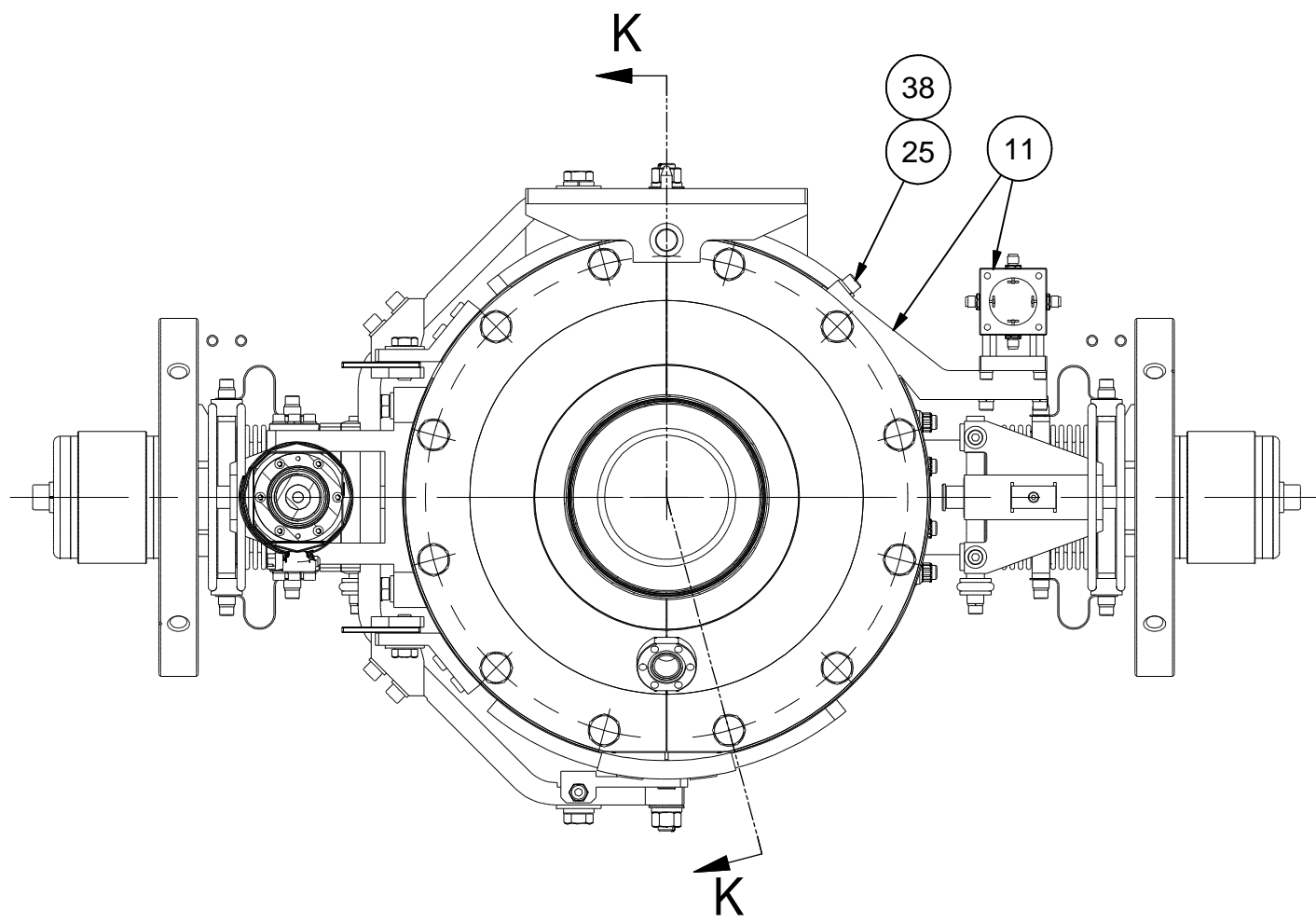
DETAIL E
(FROM SHEET 1)
SCALE 1:3



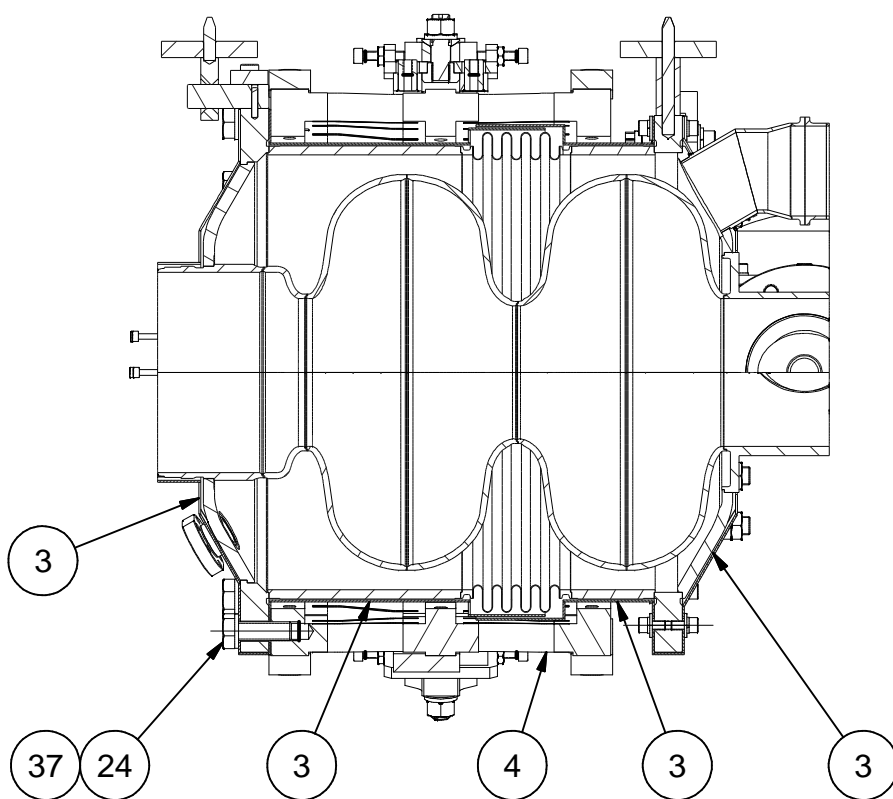
SECTION I-I
SCALE 1:3



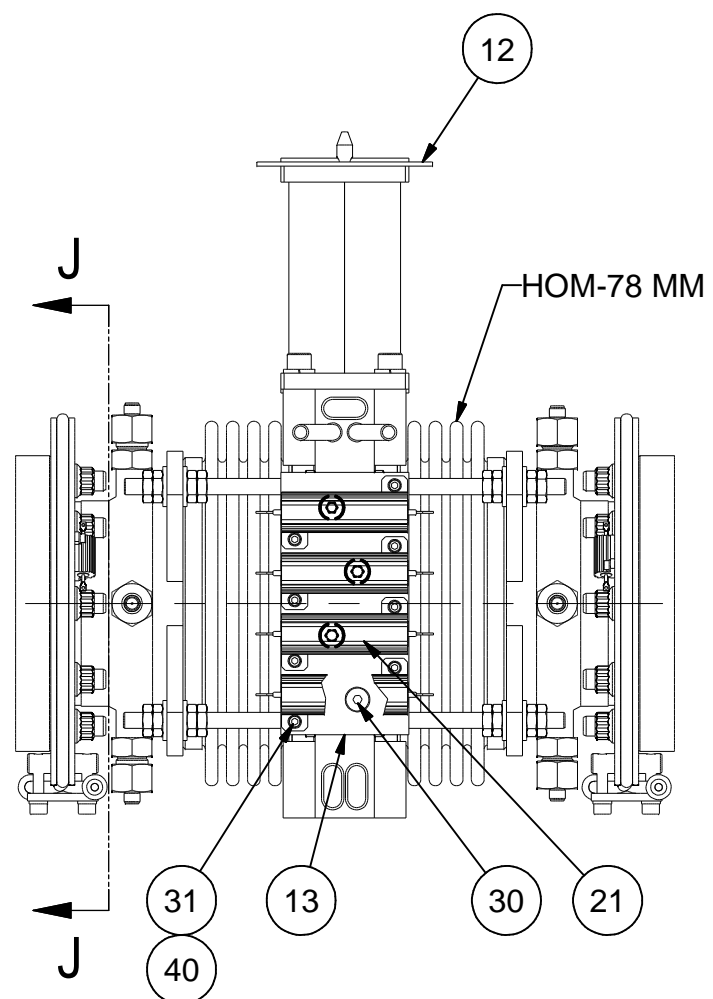
DETAIL G
(FROM SHEET 1)
SCALE 1:3



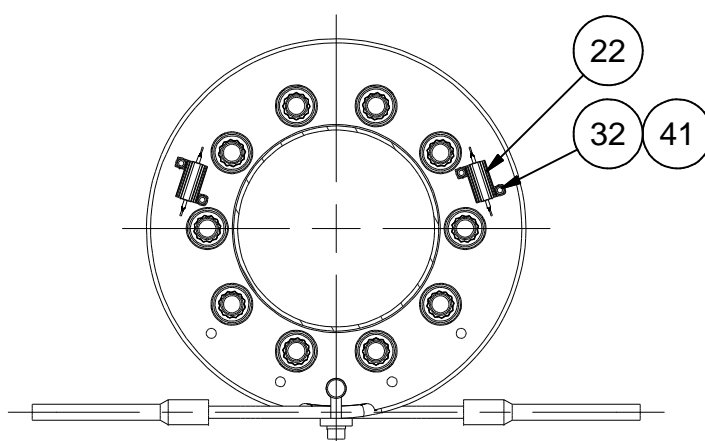
SECTION D-D
(FROM SHEET 1)
SCALE 1:4



SECTION K-K
SCALE 1:4



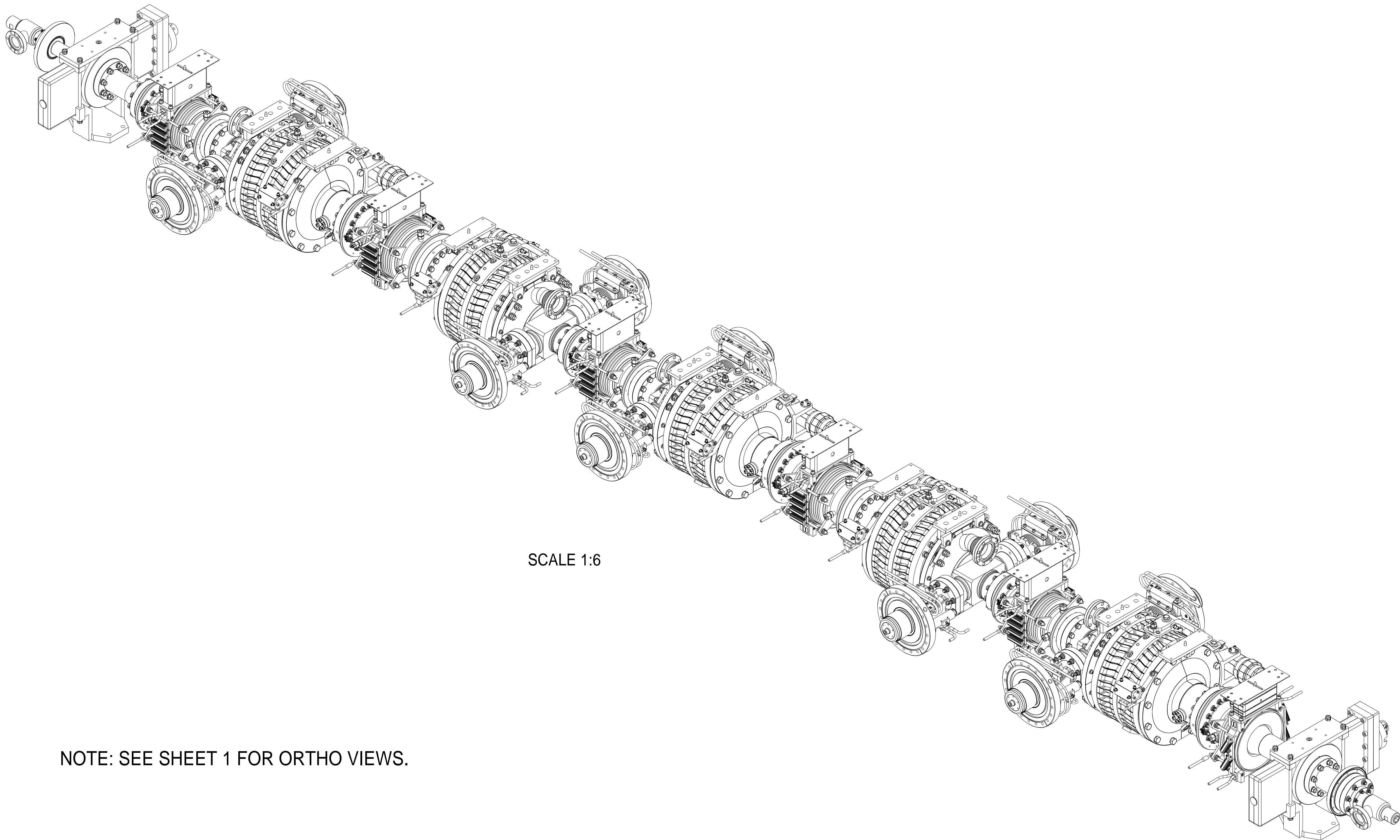
DETAIL F
(FROM SHEET 1)
SCALE 1:3



SECTION J-J
SCALE 1:3

		ITEM	DWG. NO.	DESCRIPTION			G1	G2	G3	REMARKS	REV.	
								QUANTITY				
D	PRINT DISTR.	PLOT DATE: 12/5/07 CAD FILE NAME: 7102-080.idw										
	CR-1	<div>UNLESS OTHERWISE SPECIFIED: DIMENSIONS ARE IN INCHES; TOLERANCES ON: .0 ± .02 .00 ± .010 .000 ± .005 FRACTIONS ± 1/32 ANGLES ± 0.5° ALL SURFACES ✓</div>			<div><div><div>CORNELL UNIVERSITY</div><div></div><div>LEPP</div><div>LABORATORY FOR ELEMENTARY-PARTICLE PHYSICS</div></div><div><div>CORNELL UNIVERSITY</div><div>Floyd R. Newman Laboratory</div><div>Ithaca, NY 14853</div></div></div>							
7102-080 SH. NO. 2 OF 3		<div>ERL INJECTOR CRYOMODULE</div> <div>BEAM LINE COMPONENTS ASSEMBLY II, STEP 00</div> <div>BEAM LINE COMPONENTS ASSEMBLY II: SECTIONS AND DETAILS FROM SHEET 1</div>										
REV.	CHECKED BY: VM	DRAWN BY		DRAWN FOR		DATE	SCALE	D	7102-080		REV.	
	APPROVED BY: VM	vm		M.Liepe		9/14/07			SH. NO. 2 OF 3			


BEAM EXIT END



SCALE 1:6

NOTE: SEE SHEET 1 FOR ORTHO VIEWS.

BEAM ENTRANCE END

		ITEM	DWG. NO.	DESCRIPTION	G1	G2	G3	REMARKS	REV.	
					QUANTITY					
D	PRINT	PLOT DATE: 12/5/07 CAD FILE NAME: 7102-080.idw								
	DISTR.									
7102-080 SH. NO. 3 OF 3	CR-1	UNLESS OTHERWISE SPECIFIED:		<div>CORNELL UNIVERSITY FLOYD R. NEWMAN LABORATORY Ithaca, NY 14853</div> <div>ERL INJECTOR CRYOMODULE BEAM LINE COMPONENTS ASSEMBLY II, STEP 00 BEAM LINE COMPONENTS ASSEMBLY II: ISO VIEW</div>						
		DIMENSIONS ARE IN INCHES: TOLERANCES ON: .0 ± .02 .00 ± .010 .000 ± .005 FRACTIONS ± 1/32 ANGLES ± 0.5° ALL SURFACES ✓								
		CHECKED BY: VM		DRAWN BY	DRAWN FOR	DATE	SCALE	D	7102-080	REV.
		APPROVED BY: VM		vm	M.Liepe	9/14/07				